



BRANDING THE SKIES

INTRODUCTION

Since 1995, we have been offering comprehensive & innovative services to airlines & maintenance facilities worldwide.

- We specialise in the design, manufacture & installation of high quality fully integrated aircraft liveries, using adhesive vinyl.
- We have extensive knowledge & history of solutions for branding campaigns & promotions.
- We provide multi language mandatory markings for aircraft interiors & exteriors.

All our work conforms to EASA / FAA standards and is supported by our ISO9001:2015 Certification.

OUR COMMITMENT

- We believe in working hard and sharing ideas to establish strong partnerships with airlines. This allows us to create & deliver a successful outcome every time.
 - We have a dedicated management team assigned to each project.
- We pride ourselves on a personable approach, efficiency & attention to detail.
 - Our in-house creative team will bring your vision & ideas to life.



WHY USE VINYL?

- **For Multiple Liveries**

Vinyl allows our customers greater flexibility for use across fleets. Whether delivering partial or full aircraft decoration kits, we ensure the highest quality, approved aircraft products are used on every occasion.

- **For Promotional Graphics & Advertising Campaigns**

Promotional graphics are a brilliant way to get your brand noticed & seen by millions at airports worldwide. Many airlines offer the opportunity to advertise internally & externally on their aircraft as a one-off or fleet campaigns. Using certified high quality printed vinyl, our in-house design team can help you bring your ideas to life, from initial design concept through to installation on aircraft anywhere in the world.

- **Cost Effective & Fast Turnarounds**

Vinyl is a cost effective choice and allows us to keep installation time to a minimal. In an industry with busy flight schedules and limited down time, being able to install vinyl graphics during maintenance checks is a particular advantage over paint.

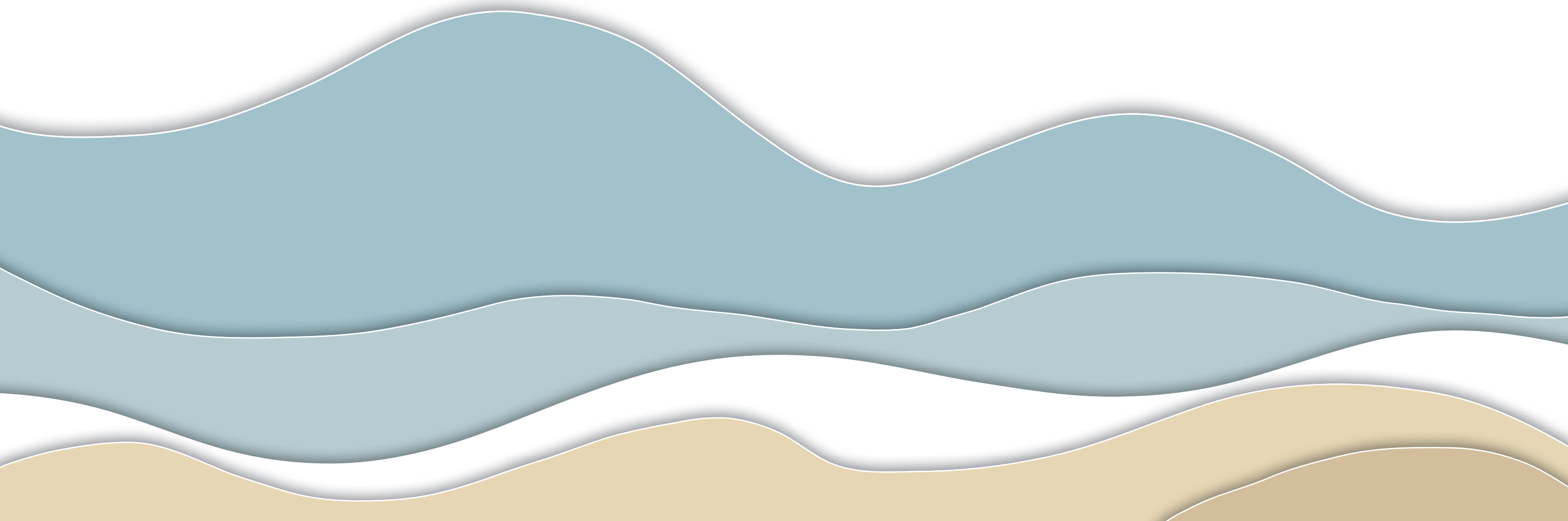


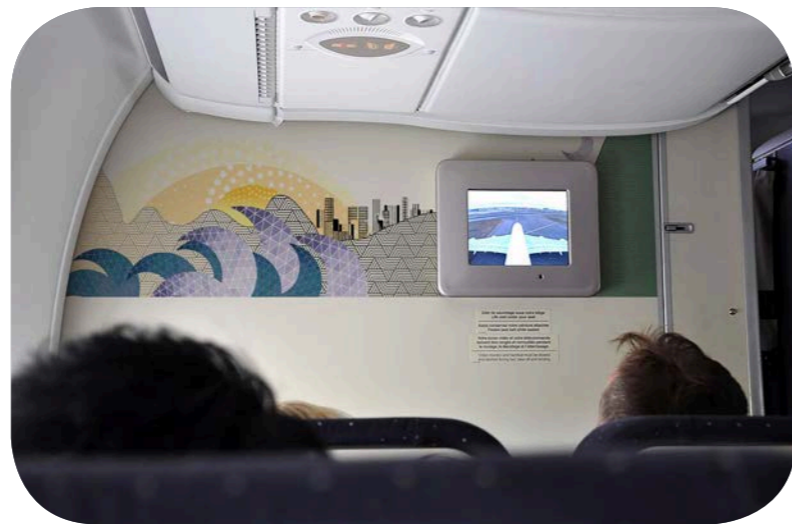
A COMPLETE SERVICE

We can provide a seamless service to include:

- Production of vinyl graphics for multiple applications
 - Technical consultation
 - Campaign & advertising concepts
- Fast delivery & lead time management
 - Installation
 - Removal
- We can also offer engineering & design data assistance through our part 21 DOA partners

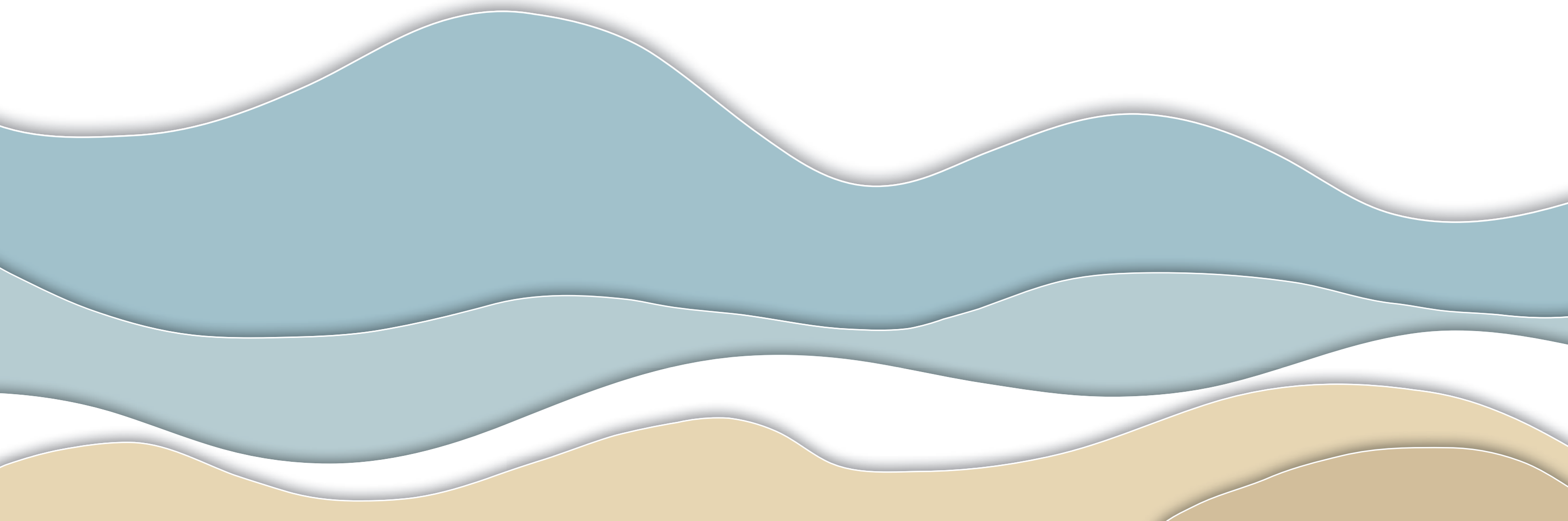
A SHARED VISION



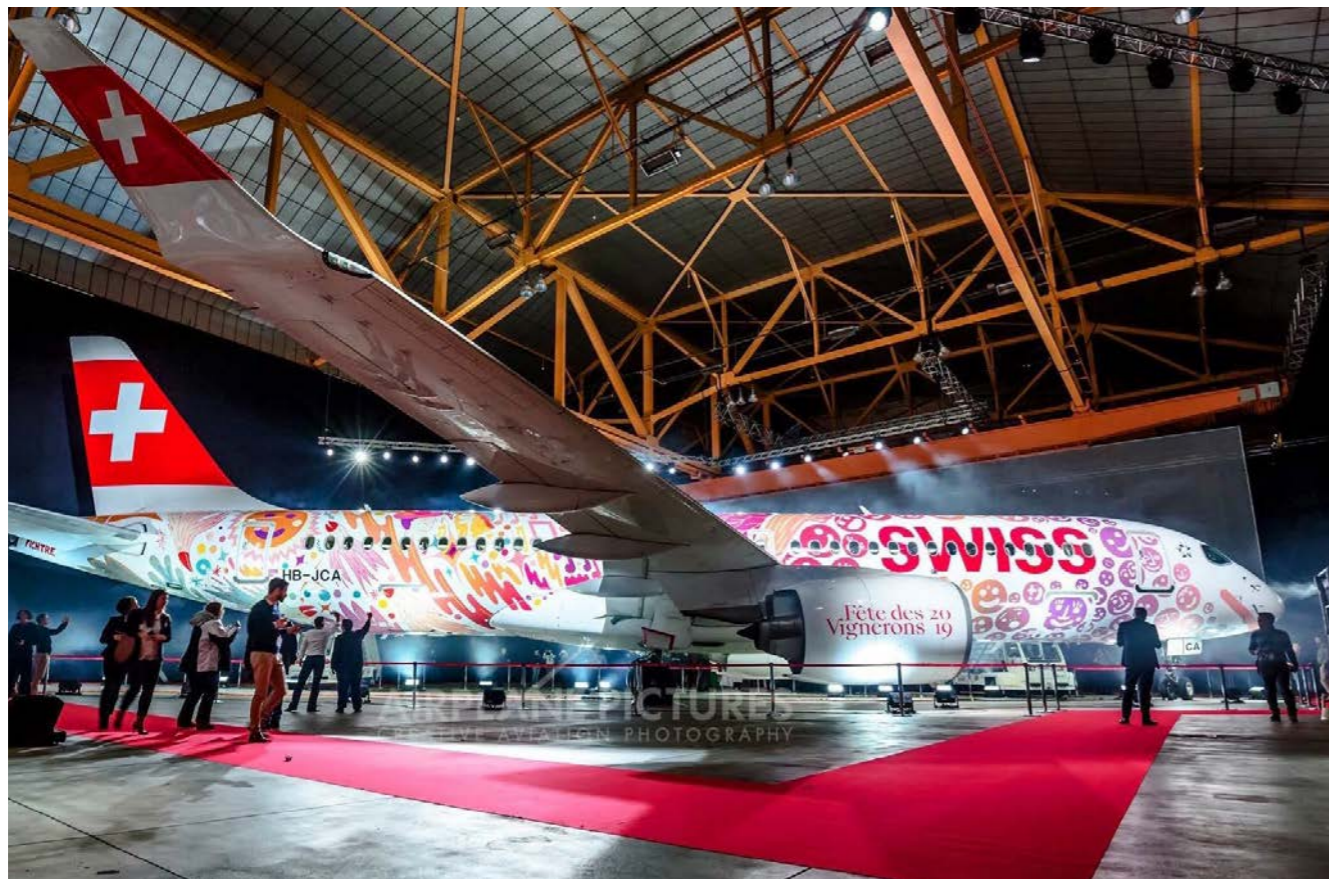


SHARED VISION - VINYL ALLOWS YOU TO SHOWCASE YOUR CONCEPT INSIDE & OUT

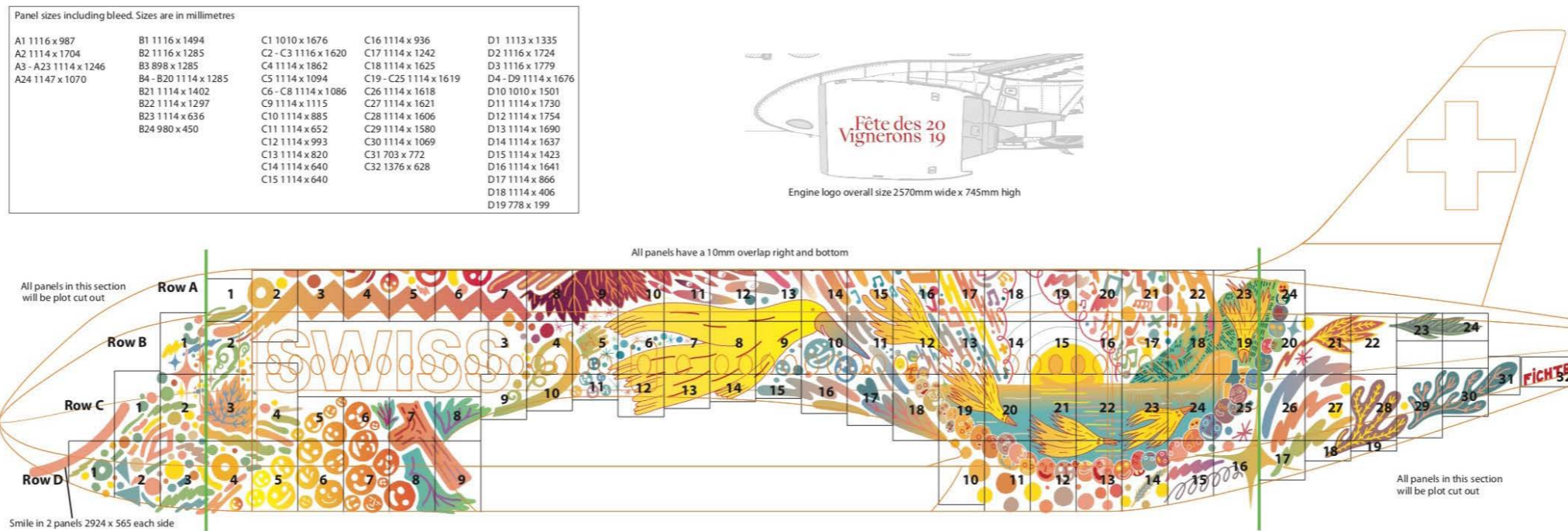
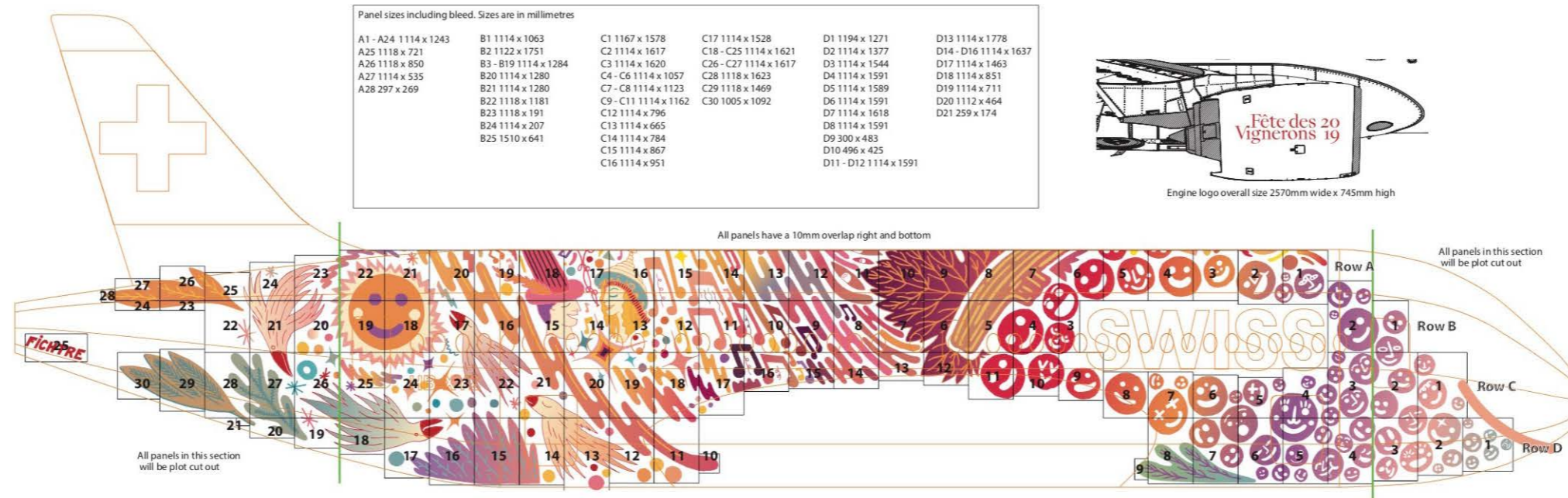
CASE STUDIES



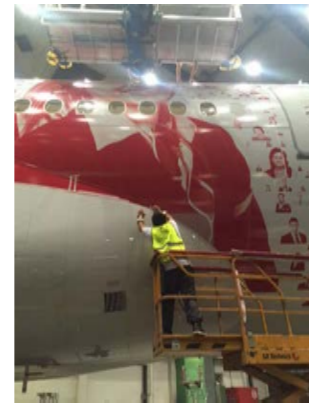
swiss



CASE STUDIES - SWISS - A COMPLEX LIVERY WRAP - MANAGEMENT, PRODUCTION, DELIVERY & INSTALLATION



CASE STUDIES - SWISS - A COMPLEX LIVERY WRAP - MANAGEMENT, PRODUCTION, DELIVERY & INSTALLATION



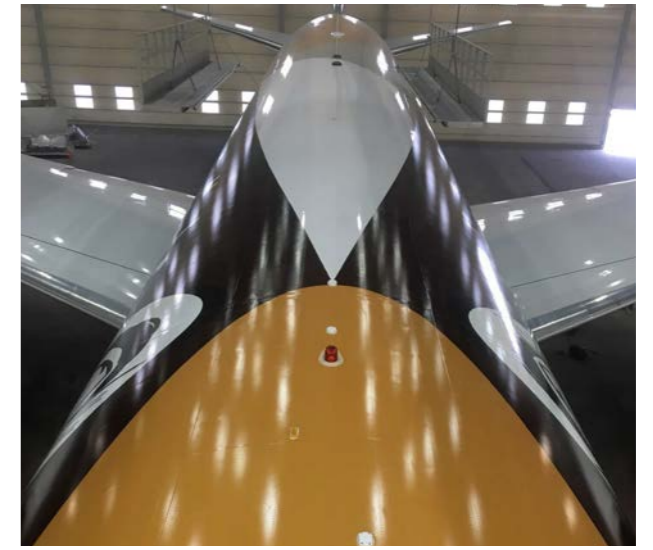
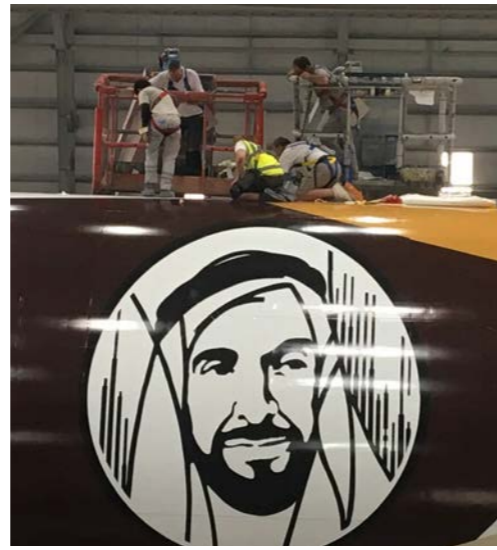
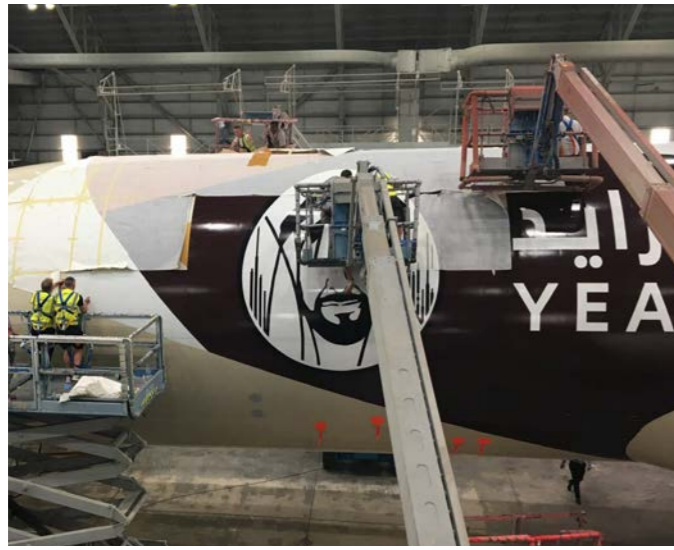
CASE STUDIES - SWISS - A COMPLEX LIVERY WRAP - MANAGEMENT, PRODUCTION, DELIVERY, INSTALLATION & REMOVAL



CASE STUDIES - SWISS - A COMPLEX LIVERY WRAP - MANAGEMENT, PRODUCTION, DELIVERY & INSTALLATION

الإتجاه
ETIHAD
AIRWAYS





CASE STUDIES - ETIHAD, YEAR OF ZAYED CAMPAIGN
A COMPLEX LIVERY WRAP - MANAGEMENT, PRODUCTION, DELIVERY & INSTALLATION

TUI 



CASE STUDIES - TUI

BRANDING CAMPAIGNS



CASE STUDIES - BRANDING CAMPAIGNS

CASE STUDIES - BRANDING CAMPAIGNS



CASE STUDIES - BRANDING CAMPAIGNS

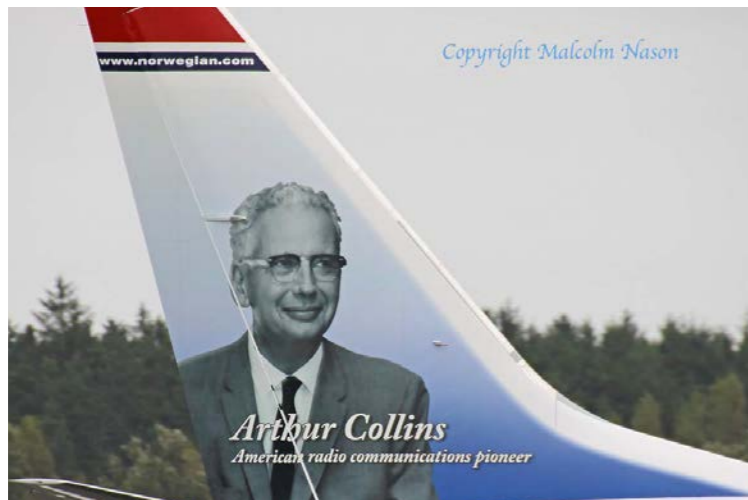
A BRIEF VISUAL HISTORY OF OUR LIVERIES



CASE STUDIES - A BRIEF VISUAL HISTORY

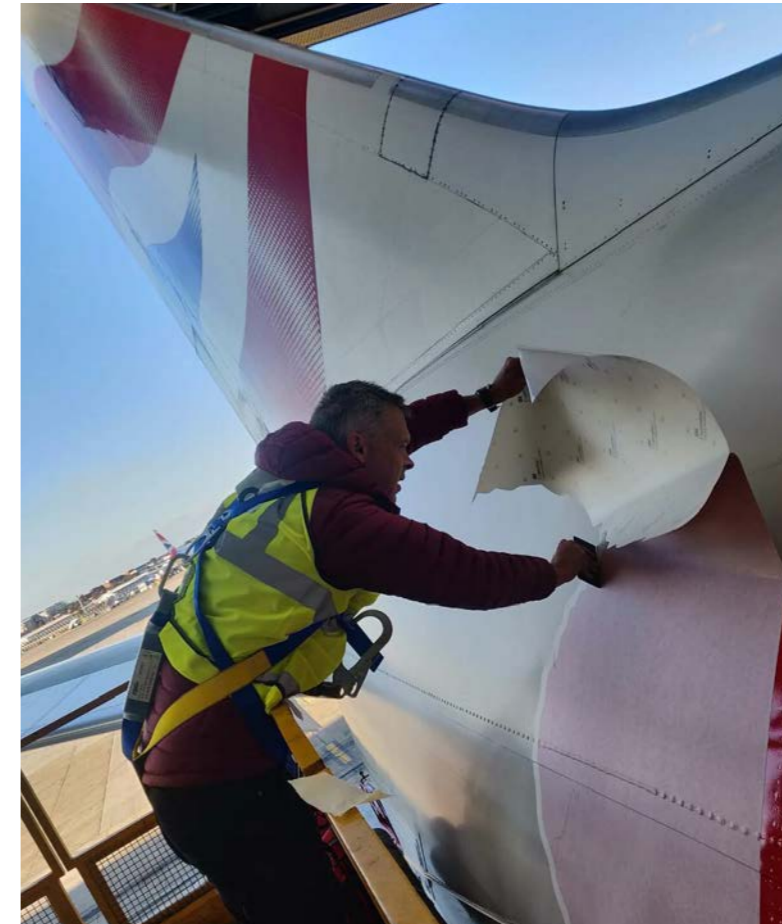


CASE STUDIES - A BRIEF VISUAL HISTORY



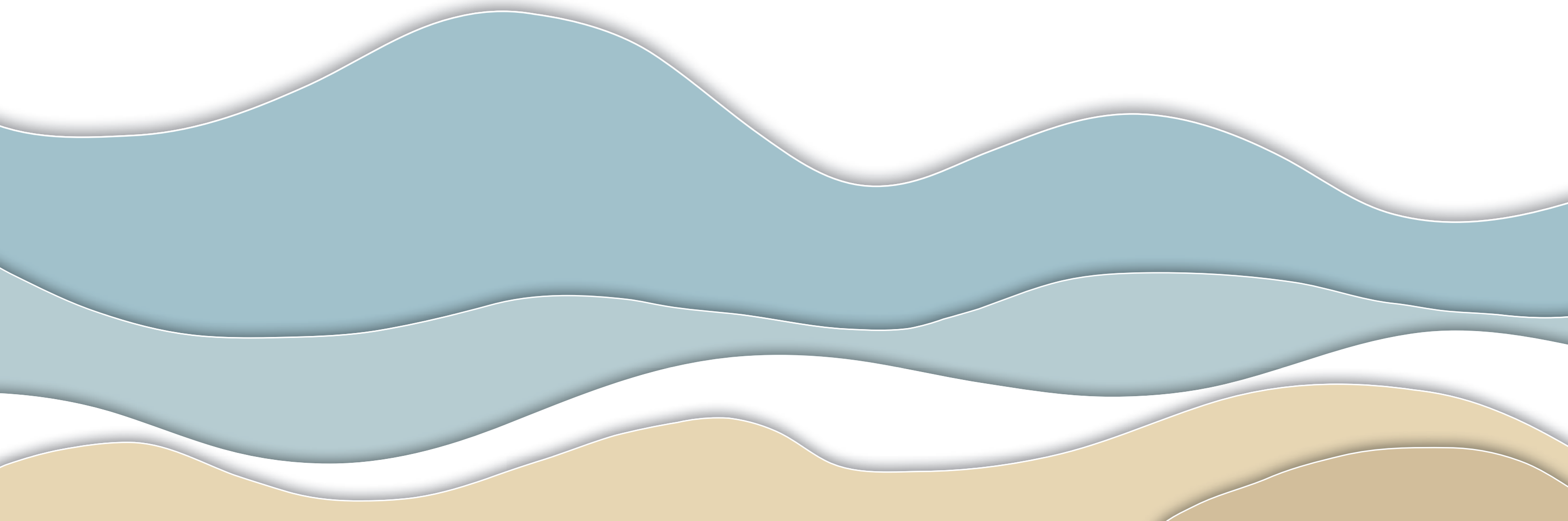
CASE STUDIES - A BRIEF VISUAL HISTORY

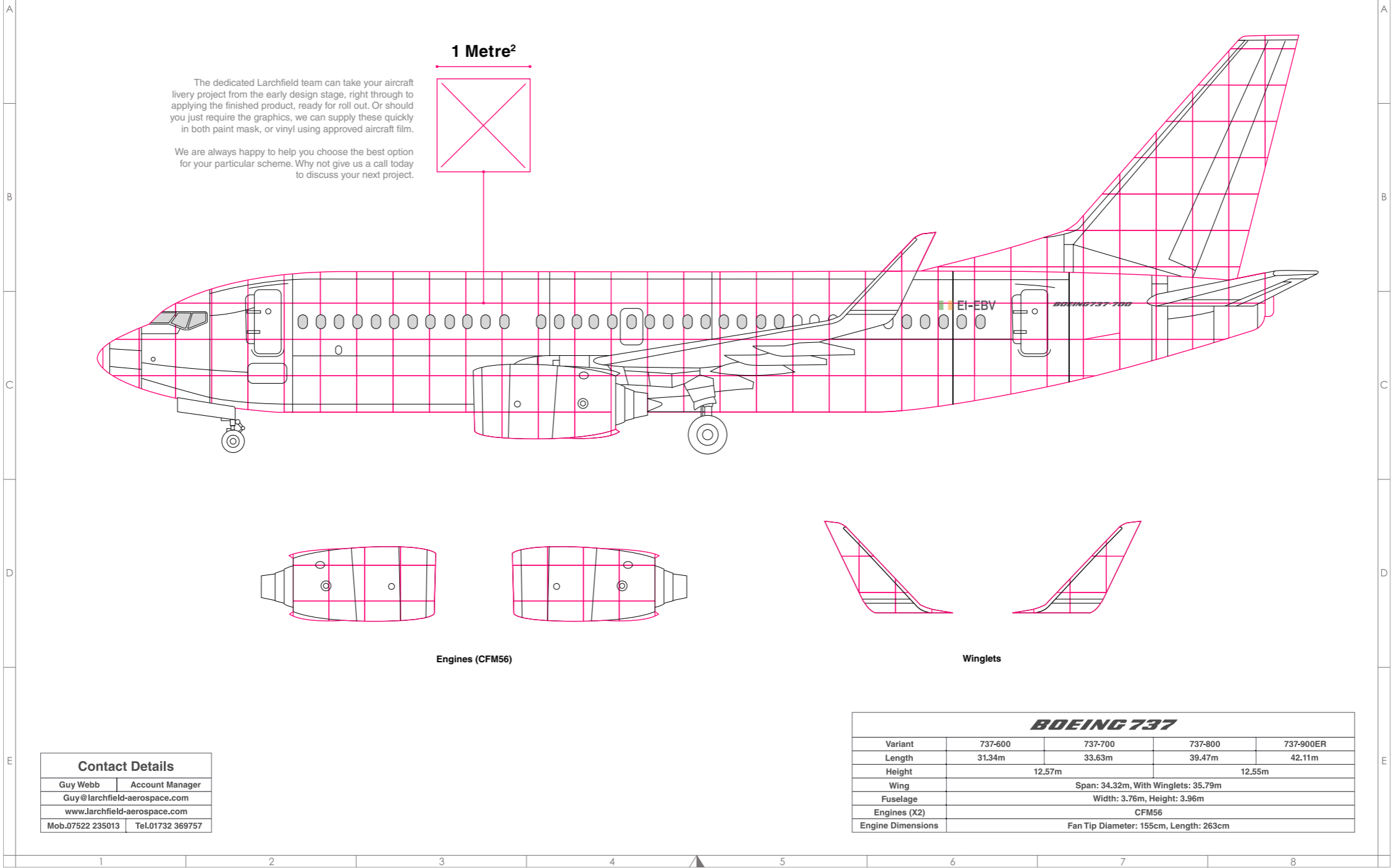
INSTALLATION



CASE STUDY - BRITISH AIRWAYS - INSTALLATION

HOW WE QUOTE

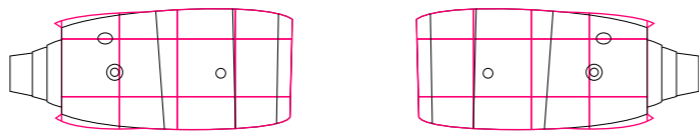
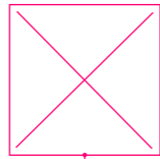




The dedicated Larchfield team can take your aircraft livery project from the early design stage, right through to applying the finished product, ready for roll out. Or should you just require the graphics, we can supply these quickly in both paint mask, or vinyl using approved aircraft film.

We are always happy to help you choose the best option for your particular scheme. Why not give us a call today to discuss your next project.

1 Metre²



Engines (CFM56)



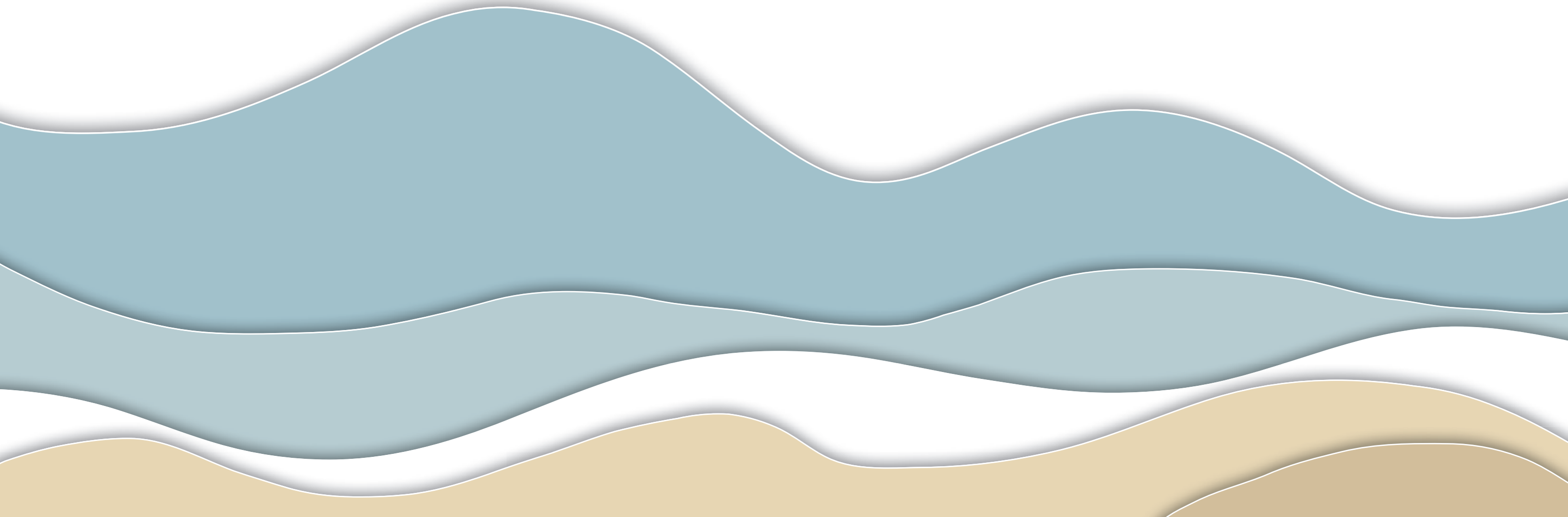
Winglets

Contact Details	
Guy Webb	Account Manager
Guy@larchfield-aerospace.com	
www.larchfield-aerospace.com	
Mob.07522 235013	Tel.01732 369757

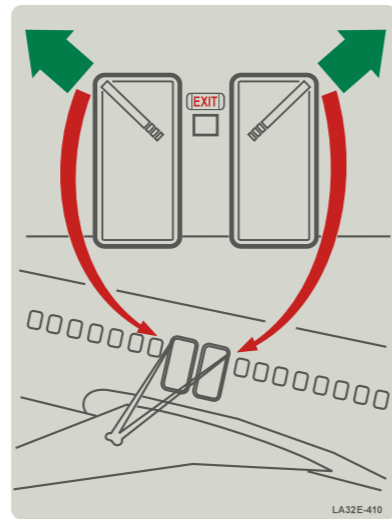
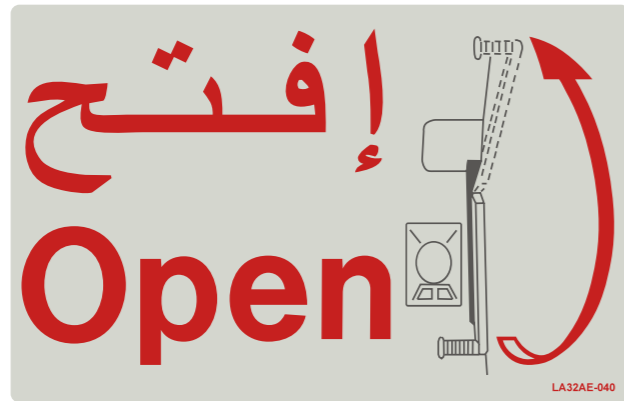
BOEING 737				
Variant	737-600	737-700	737-800	737-900ER
Length	31.34m	33.63m	39.47m	42.11m
Height	12.57m		12.55m	
Wing	Span: 34.32m, With Winglets: 35.79m			
Fuselage	Width: 3.76m, Height: 3.96m			
Engines (X2)	CFM56			
Engine Dimensions	Fan Tip Diameter: 155cm, Length: 263cm			

QUOTING GUIDE BASED ON MATERIAL / A SQUARE METRE RATE

OTHER SERVICES



INTERIOR & EXTERIOR PLACARDS



SLIDE INSIDE
 SLIDE INFLATES AUTOMATICALLY WHEN ARMED AND DOOR IS OPENED
АВАРИЙНЫЙ ТРАП ВНУТРИ
 ТРАП НАДУВАЕТСЯ АВТОМАТИЧЕСКИ КОГДА ВЗВЕДЕН И ДВЕРЬ ОТКРЫТА

إسحب الكمامة
 للاسفل لإطلاق
 الاكسجين
Pull Mask Down To Turn on Oxygen

注意！
 僅限緊急時使用
CAUTION
 Use only in case of emergency



EMERGENCY EXIT
জরুরি বহির্গমন

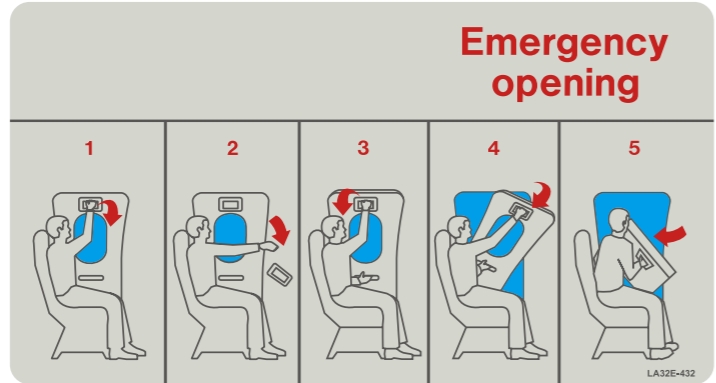
POKRYWA PÓŁKI MUSI BYĆ ZAMKNIĘTA PODCZAS KOŁOWANIA, STARTU, TURBULENCJI I LĄDOWANIA
 DOOR MUST BE LATCHED CLOSED DURING TAXI, TAKEOFF, TURBULENCE, AND LANDING

NO SMOKING IN LAVATORY
В ТУАЛТЕТЕ КУРИТЬ ЗАПРЕЩАЕТСЯ

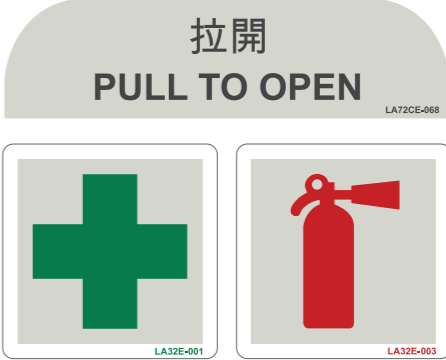
↓ Pull إسحب
 ↓ Pull টানুন
 ▲ Disarmed!
 ▼ Armed!

12 C B A
 12 F E D

OTWIERAJĄC I ZAMYKAJĄC DRZWI ZAWSZE TRZYMAJ SIĘ UCHWYTU NA ŚCIANCE
 WHILE OPERATING DOOR, HOLD ONTO ASSIST HANDLE AT ALL TIMES



Pull اسحب Push ادفع
TOYALETA LAVATORY



CASE STUDIES - INTERIOR PLACARDS

DANGER
DO NOT OPEN DOOR
IF RED WARNING LIGHT IS FLASHING
(CABIN PRESSURIZED!)

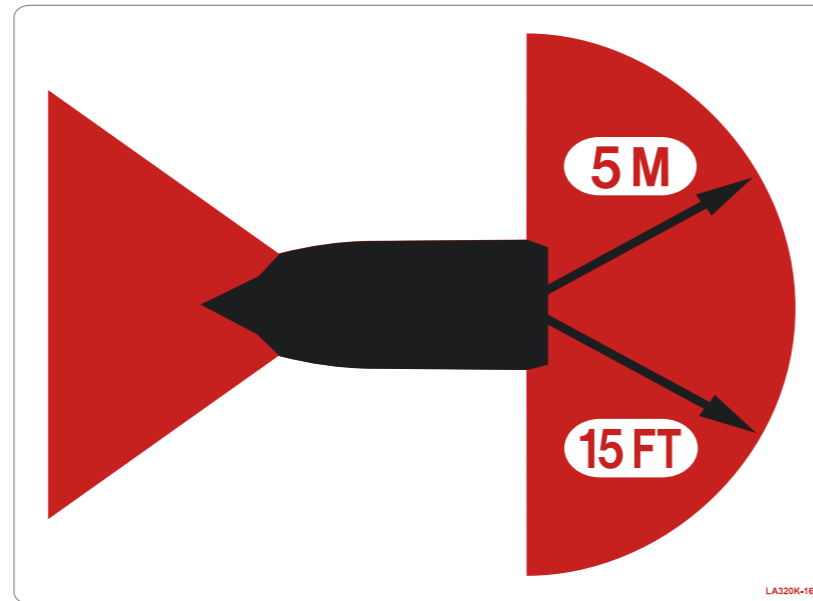
LA320K-098

STATIC PORTS
DO NOT PLUG OR DEFORM HOLES
AREA WITHIN RED LINE MUST BE
SMOOTH AND CLEAN.

LA320K-022



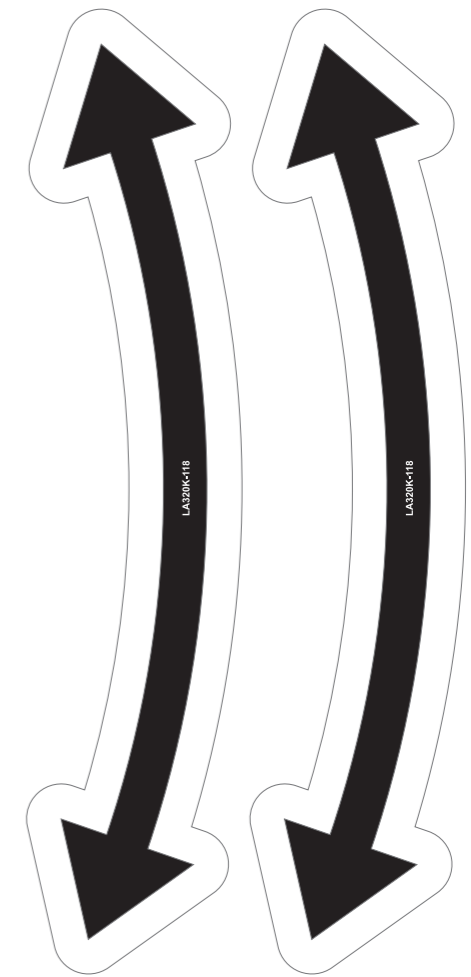
LA320K-166



LA320K-167

Warning
Stand clear of
hazard areas
while engine
is running

LA320K-169



LA320K-118

LA320K-118

CAUTION
↓ MAKE SURE THE FAN COWL DOORS
ARE FULLY LATCHED WHEN CLOSED ↓

LA320K-142

10

LA320K-005



LA320K-003



LA320K-004

15

LA320K-006



LA320K-074

LA320K-008

CUT HERE IN EMERGENCY

LA320K-138

20

LA320K-008

STENCILS

WARNING
RAM AIR TURBINE
KEEP CLEAR

LAR77E-022

DEACTIVATED

ACTIVATED

LAR77E-090

INTERPHONE
JACK LOCATION
OPEN FAN COWL
FOR ACCESS

LAR77E-101

CAUTION
ENSURE
THRUST REVERSER
IS CLOSED
AND LATCHED
BEFORE CLOSING
FAN COWLS

LAR77E-096

THRUST REVERSER
ACTUATOR ACCESS

LAR77E-088

NO STEP

LAR77E-108

WARNING
HIGH POWERED HOT AIR EXHAUST
KEEP OUT WHEN POWER IS ON

LAR77E-023

WARNING HOT AIR EXHAUST

LAR77E-100

HOT

LAR77E-033

EXAMPLE - STENCILS

CONSUMABLES



WE STOCK A WIDE RANGE OF CONSUMABLES, WINDOW BLANKS & PPE. A CATALOGUE IS AVAILABLE ON OUR WEBSITE



PRESENTED FEBRUARY 2019

CONTACT: GUY WEBB
SALES@LARCHFIELD-AEROSPACE.COM
+44 (0)1732 369757

Larchfield Aerospace & Graphics Limited
Unit 3 Tannery Road
Tonbridge, Kent
United Kingdom
TN9 1RF